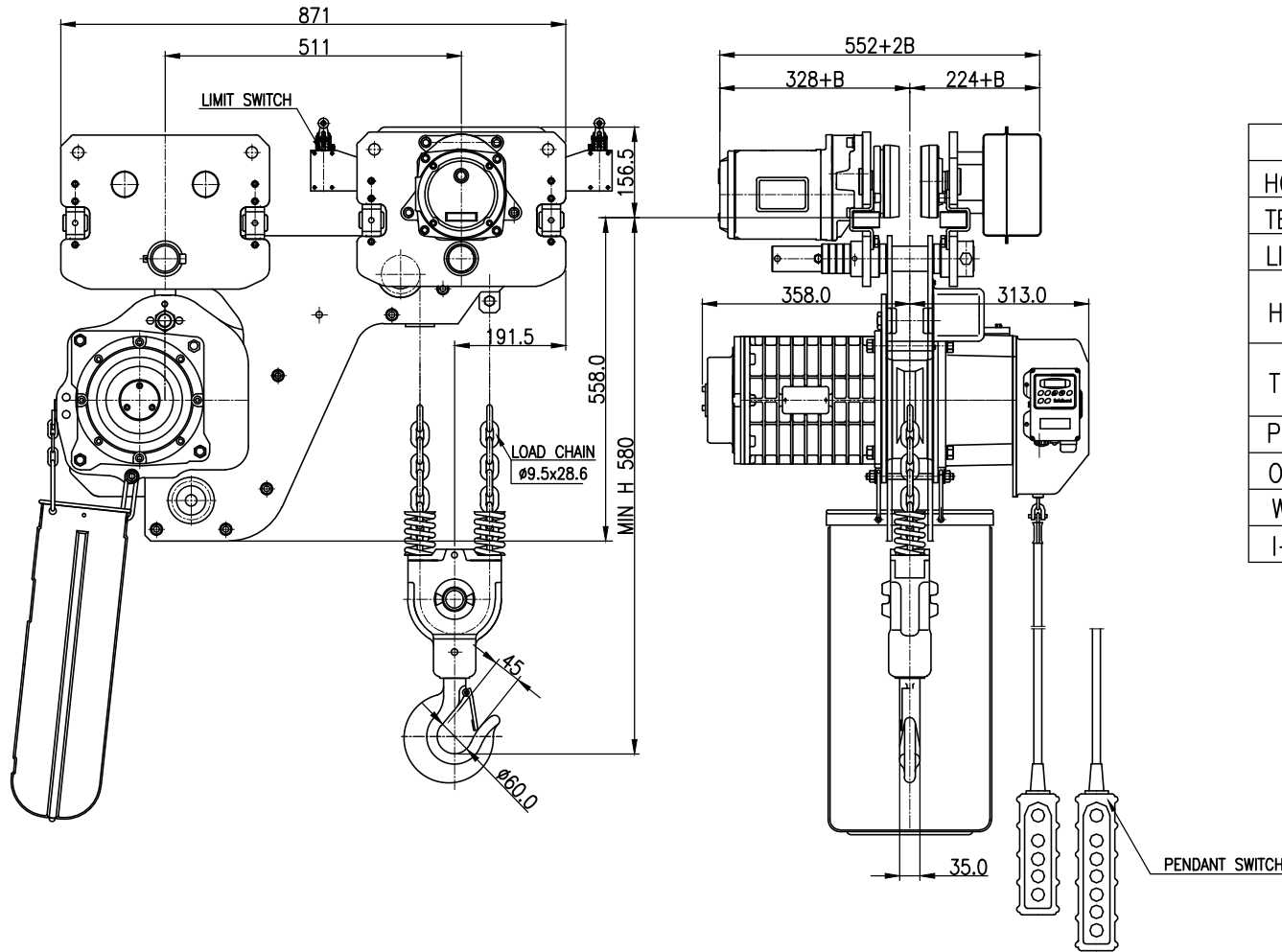


NO	DESCRIPTION	MAT'L	Q'TY	WT(kg)	REMARKS



SPECIFICATION			
HOISTING LOAD	3	TON	
TESTING LOAD	3.75	TON	
LIFTING HEIGHT	4	M	
HOISTING	SPEED	5.15	M/MIN
	MOTOR	3.5	KW x 1 SET
TRAVERSING	SPEED	14	M/MIN
	MOTOR	0.75	KW x 1 SET
POWER SUPPLY	AC 380 x 3 ϕ x 60 Hz		
OPERATING METHOD	P.B type ON . FL		
WEIGHT	275 KG		
I-BEAM SIZE	100-150 MM		

NOTE

- * B는 BEAM 변동치수 치수임.
- * ROLLER DIA : $\phi 125$
- * LIMIT SWITCH : OPTION
- * 본 도면은 I-BEAM 100MM 기준임
- * ADJUSTING COLLAR 외측 4EA 내측 2EA x 2SET

TITLE DSHM-3W CHAIN HOIST				PROJECTION	
WORK NO		WORK NAME			
				SCALE	Q'TY
				1/1	1
DRAWN	CHECKED	REVIEWED	APPROVED	DRAWING NO	
H.J	-	LEE	Y. K	DSH030200	
2022.12.01	-	2022.12.01	2022.12.01		

도면에 지시되지 않은 일반공차						
가공별	치수	3-6	6-30	30-120	120-315	315-1000
선	삭	±0.1	±0.2	±0.3	±0.5	±0.8
구멍간	거리	±0.1	±0.2	±0.3	±0.5	±0.8

REV.NO	DATE	REVISION DESCRIPTION	DRAWN	CHECKED	APPROVED

DAESAN INoTEC INC